

**INSTRUMENT  
APPROACH  
CHART - ICAO**

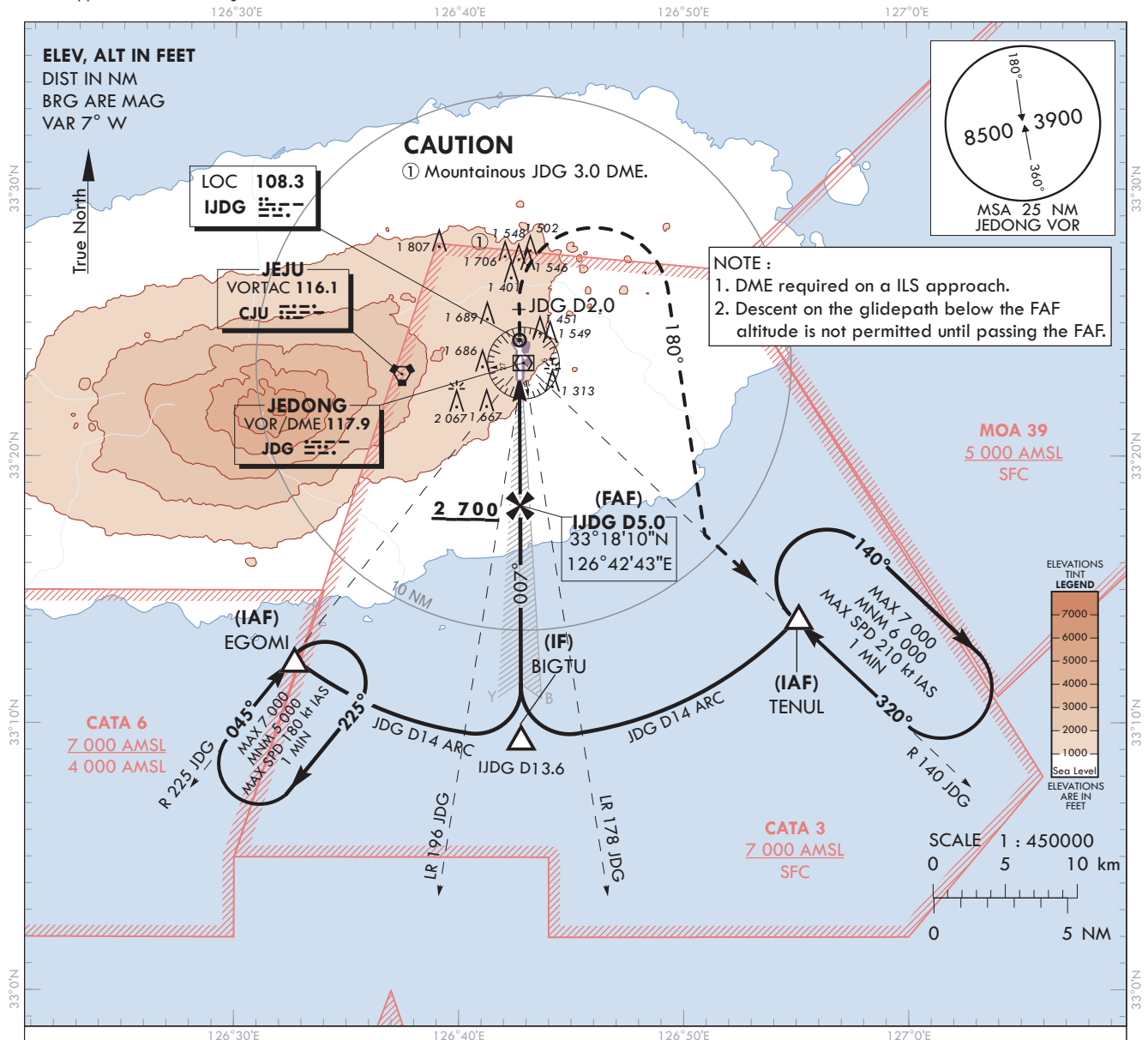
**AERODROME ELEV 1 174 ft**  
HEIGHTS RELATED TO  
THR RWY 01 - ELEV 1 102 ft

JEJU APP 121.2  
124.05  
JEONGSEOK TWR 124.35

**JEJU/Jeongseok(RKPD)**

**ILS RWY 01**

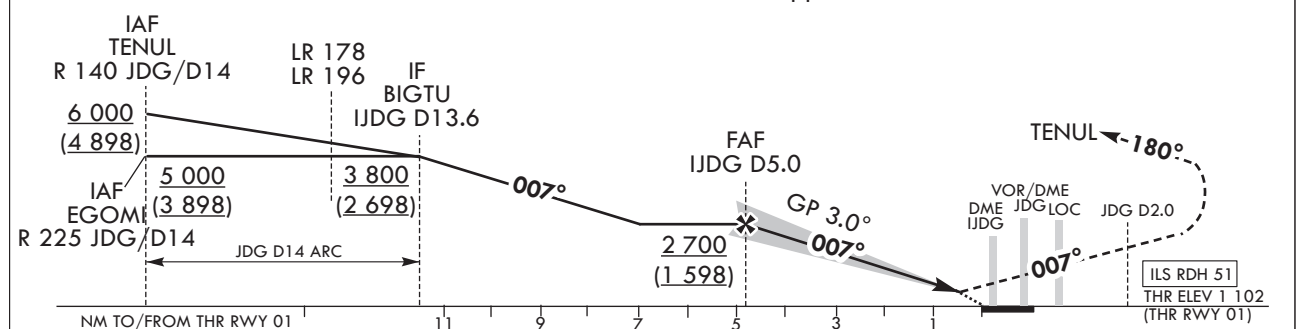
Note : Approach under ICAO Flight Procedures.



**TRANSITION ALT 14 000**  
**TRANSITION LVL FL 140**

**MISSED APPROACH**

Climb straight ahead until JDG D2.0,  
turn right HDG180° to intercept R 140 JDG,  
then proceed to TENUL 6 000 ft and hold.  
Missed approach turn limited to 210 kt IAS maximum.



CATEGORY		DA(H)	A	B	C	D							
CAT-I (4.0%)	FULL	1 302(200)	RVR 750 m, VIS 800 m					Knots	60	90	120	150	180
	ALS INOP		1 200 m										
CAT-I (2.5%)	FULL	1 482(380)	1 500 m				Rate of descent (FAF - THR)	V/V fpm	323	485	646	808	970
	ALS INOP		2 000 m										

Change : Improved clarity such as terrain.

## AERONAUTICAL DATA TABULATION

ILS approach to RWY 01 from TENUL, EGOMI		
Fix/point		Coordinates
TENUL(IAF)	R 140 JDG/14.00 NM	33°14'01.6"N 126°55'08.7"E
EGOMI(IAF)	R 225 JDG/14.00 NM	33°12'24.7"N 126°32'40.7"E
BIGTU(IF)	BRG 187.12°/13.60 NM IJDG	33°09'30.3"N 126°42'46.3"E
D5.0 IJDG(FAF)	BRG 187.12°/4.95 NM IJDG	33°18'10.2"N 126°42'43.3"E
THR RWY 01		33°22'58.36"N 126°42'41.71"E
IJDG LOC		33°24'22.7"N 126°42'41.2"E
IJDG DME		33°23'07.8"N 126°42'46.5"E
D2.0 JDG(MATF)	2.00 NM JDG	33°25'31.7"N 126°42'40.8"E
TENUL(MAHF)	R 140 JDG/14.00 NM	33°14'01.6"N 126°55'08.7"E

**INSTRUMENT  
APPROACH  
CHART - ICAO**

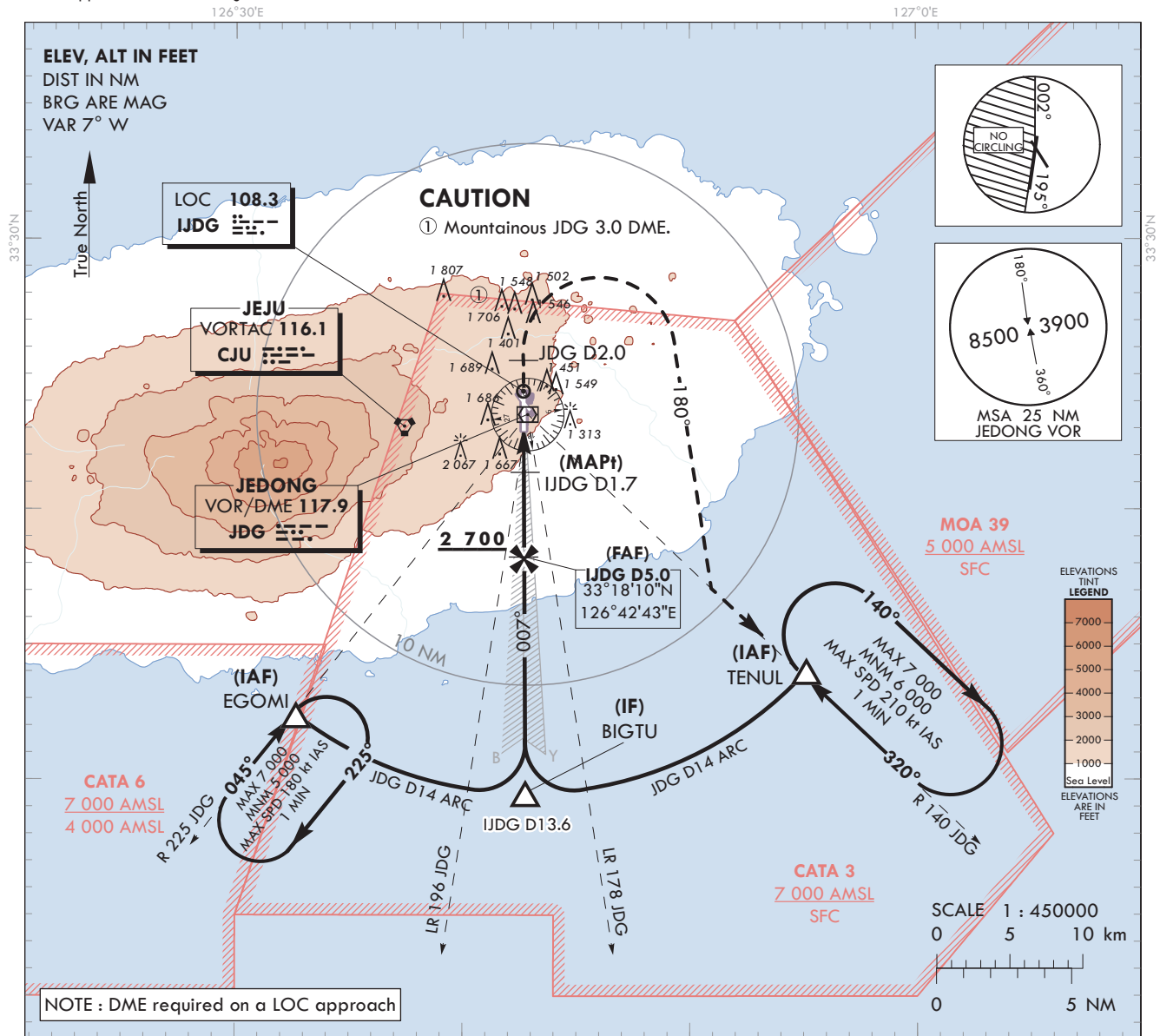
**AERODROME ELEV 1 174 ft**  
HEIGHTS RELATED TO  
THR RWY 01 - ELEV 1 102 ft

JEJU	APP	121.2
JEONGSEOK	TWR	124.35

**JEJU/Jeongseok(RKPD)**

**LOC RWY 01**

Note : Approach under ICAO Flight Procedures.



12/06

12/06

RECOMMENDED PROFILE	DME IJDG	5	4	3	2	1.7
Final Approach Gradient 5.31%, 323 ft/NM	ALT(HGT)	2 700 (1 598)	2 393 (1 291)	2 070 (968)	1 747 (645)	1 660 (558)

TRANSITION ALT 14 000  
TRANSITION LVL FL 140

### MISSED APPROACH

Climb straight ahead until JDG D2.0, turn right HDG 180° to intercept R 140 JDG, then proceed to TENUL 6 000 ft and hold.  
Missed approach turn limited to 210 kt IAS maximum.

IAF TENUL R 140 JDG/D14 6 000 (4 898)

IAF EGOMI R 225 JDG/D14 5 000 (3 898)

IF BIGTU IJDG D13.6 3 800 (2 698)

FAF IJDG D5.0 2 700 (1 598)

MAPt IJDG D1.7

VOR/DME JDG LOC JDG D2.0

TENUL 180°

THR ELEV 1 102 (THR RWY 01)

007°

007°

JDG D14 ARC

11 9 7 5 3 1

NM TO/FROM THR RWY 01

CATEGORY	MDA(H)	A	B	C	D	
LOC (4.0%)	FULL	1 660	2 500m			
	ALS INOP	(558)	3 000m			
LOC (2.5%)	FULL	1 720	2 900m			
	ALS INOP	(618)	3 300m			
MAX IAS		100	135	180	205	

Rate of descent  
(FAF - THR)

knots	60	90	120	150	180
V/V fpm	315	473	630	788	945

\*Circling

1 920(746) 2 020(846)

3 500m 3 800m 4 600m

\* Timing Not authorized for defining MAPt.

\* Circling Not authorized west of RWY 01-19.

JEJU/Jeongseok(RKPD)  
LOC RWY 01

## AERONAUTICAL DATA TABULATION

LOC approach to RWY 01 from TENUL, EGOMI		
Fix/point		Coordinates
TENUL(IAF)	R 140 JDG/14.00 NM	33°14'01.6"N 126°55'08.7"E
EGOMI(IAF)	R 225 JDG/14.00 NM	33°12'24.7"N 126°32'40.7"E
BIGTU(IF)	BRG 187.12°/13.60 NM IJDG	33°09'30.3"N 126°42'46.3"E
D5.0 IJDG(FAF)	BRG 187.12°/4.95 NM IJDG	33°18'10.2"N 126°42'43.3"E
D1.7 IJDG(MAPt)	BRG 187.12°/1.70 NM IJDG	33°21'25.6"N 126°42'42.2"E
THR RWY 01		33°22'58.36"N 126°42'41.71"E
IJDG LOC		33°24'22.7"N 126°42'41.2"E
IJDG DME		33°23'07.8"N 126°42'46.5"E
D2.0 JDG(MATF)	2.00 NM JDG	33°25'31.7"N 126°42'40.8"E
TENUL(MAHF)	R 140 JDG/14.00 NM	33°14'01.6"N 126°55'08.7"E

**INSTRUMENT  
APPROACH  
CHART - ICAO**

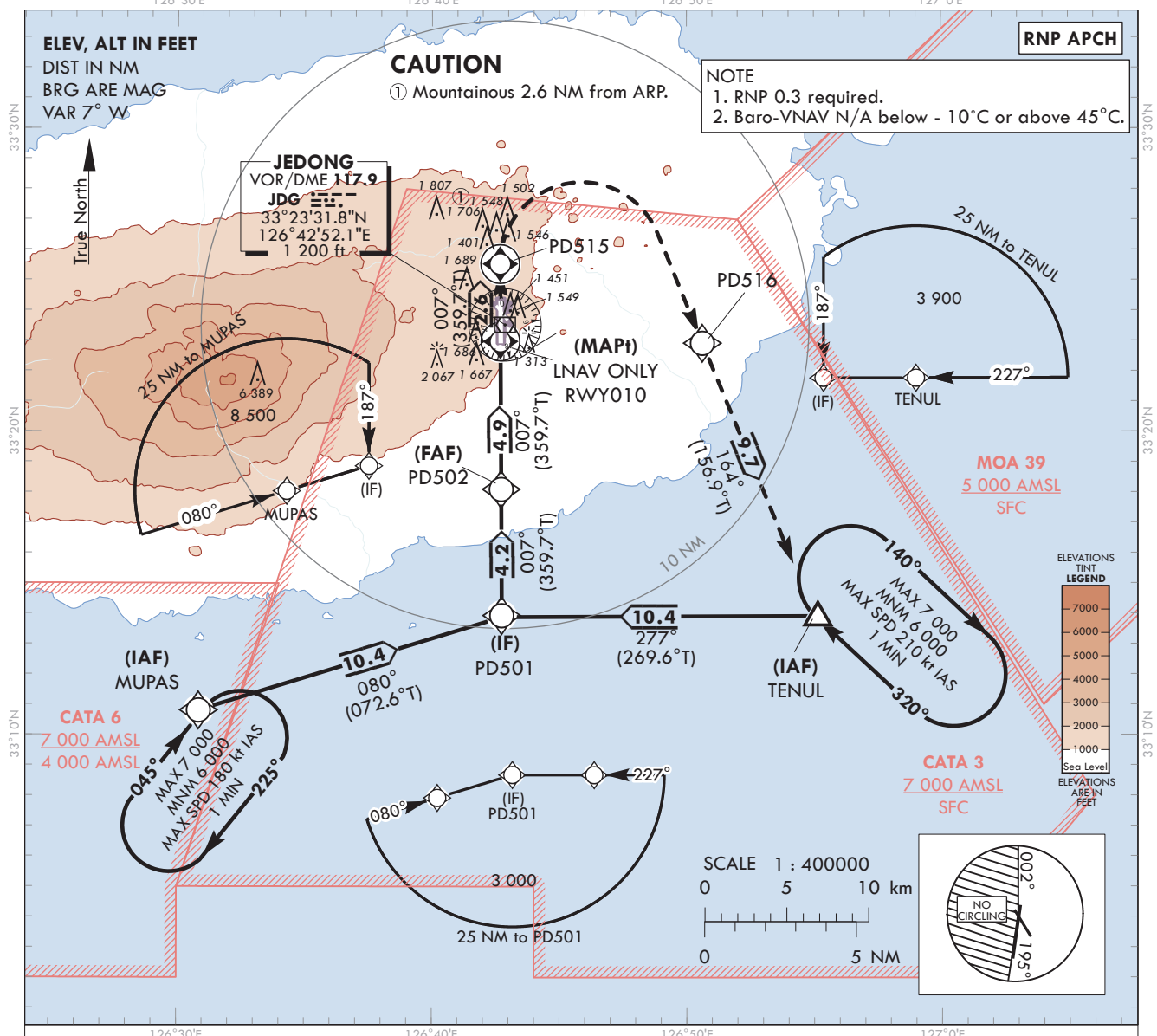
**AERODROME ELEV 1 174 ft**  
HEIGHTS RELATED TO  
THR RWY 01 - ELEV 1 102 ft

JEJU APP 121.2  
124.05  
JEONGSEOK TWR 124.35

**JEJU/Jeongseok(RKPD)**

Note : Approach under ICAO Flight Procedures.

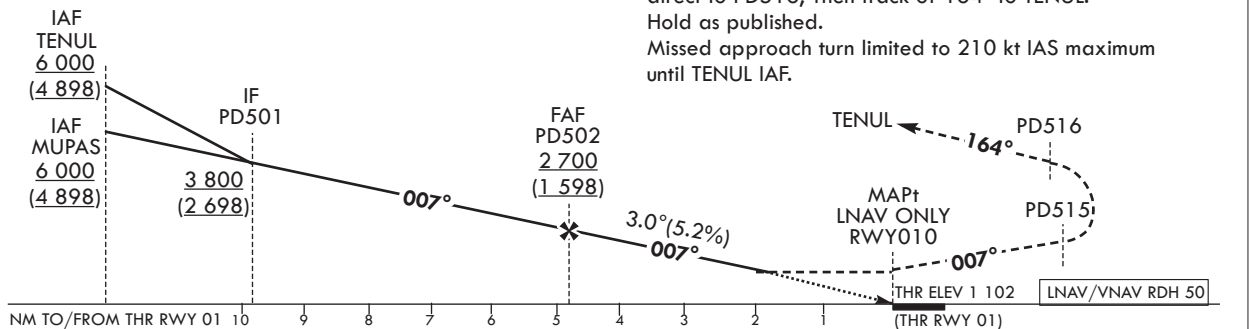
**RNP RWY 01**



TRANSITION ALT 14 000  
TRANSITION LVL FL 140

**MISSED APPROACH**

Climb to 6 000 ft on track of 007° to PD515, turn right direct to PD516, Then track of 164° to TENUL.  
Hold as published.  
Missed approach turn limited to 210 kt IAS maximum until TENUL IAF.



CATEGORY		A	B	C	D
LNAV /VNAV	FULL	DA(H)	3 000 m		
	ALS INOP	1 730 (628)	3 400 m		
LNAV	FULL	MDA(H)	3 600 m		
	ALS INOP	1 830 (728)	4 000 m		
MAX IAS		100	135	180	205
*Circling		1 920(746)		2 020(846)	
		4 000m		4 600m	

knots	60	90	120	150	180
Rate of descent V/V fpm	318	478	637	796	955

\* Timing not authorized for defining MAPt.  
\* Circling not authorized west of RWY 01-19.

Change : Improved clarity such as terrain.

JEJU/Jeongseok(RKPD)  
RNP RWY 01

## AERONAUTICAL DATA TABULATION

## Instrument Approach Procedure Coding Tables

## RNP RWY 01 - via TENUL to PD501 (IF)

Serial Number	Path Descriptor	Waypoint Identifier	Fly-over	Course/Track °M(°T)	Distance (NM)	Turn direction	Altitude (ft)	Speed (kt)	Coordinates	VPA/ TCH	Navigation specification	Remarks
001	IF	TENUL	-	-	-	-	+6 000	-	33°14'01.6"N 126°55'08.7"E	-	RNP APCH	IAF
002	TF	PD501	-	277(269.6)	10.4	-	+3 800	-	33°13'56.3"N 126°42'44.8"E	-	RNP APCH	IF

## RNP RWY 01 - via MUPAS to PD501 (IF)

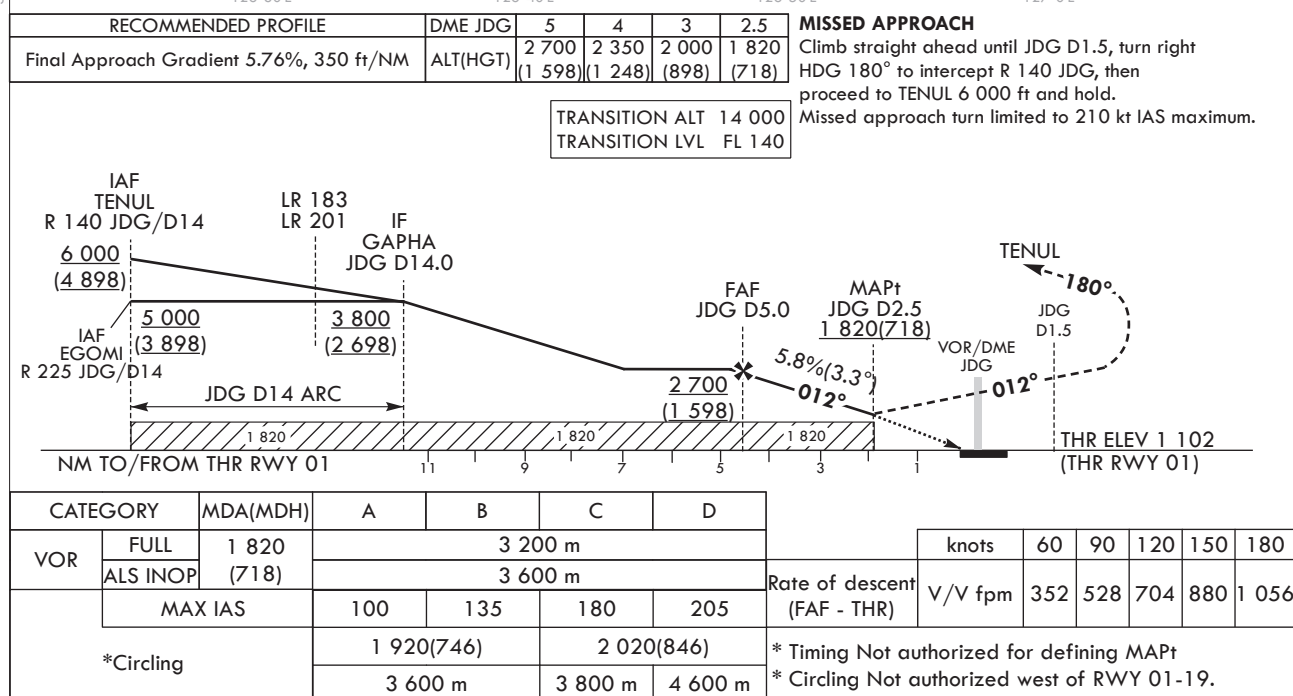
Serial Number	Path Descriptor	Waypoint Identifier	Fly-over	Course/Track °M(°T)	Distance (NM)	Turn direction	Altitude (ft)	Speed (kt)	Coordinates	VPA/ TCH	Navigation specification	Remarks
001	IF	MUPAS	-	-	-	-	+6 000	-	33°10'49.1"N 126°30'51.5"E	-	RNP APCH	IAF
002	TF	PD501	-	080(072.6)	10.4	-	+3 800	-	33°13'56.3"N 126°42'44.8"E	-	RNP APCH	IF

## RNP RWY 01 - via PD501 (IF) to MAHF

Serial Number	Path Descriptor	Waypoint Identifier	Fly-over	Course/Track °M(°T)	Distance (NM)	Turn direction	Altitude (ft)	Speed (kt)	Coordinates	VPA/ TCH	Navigation specification	Remarks
002	TF	PD501	-	-	-	-	+3 800	-	33°13'56.3"N 126°42'44.8"E	-	RNP APCH	IF
003	TF	PD502	-	007(359.7)	4.2	-	+2 700	-	33°18'06.1"N 126°42'43.4"E	-	RNP APCH	FAF
004	TF	RW010	Y	007(359.7)	4.9	-	+1 830	-	33°22'58.4"N 126°42'41.7"E	3.00/50	RNP APCH	MAPt
005	TF	PD515	Y	007(359.7)	2.6	-	-	-210	33°25'31.7"N 126°42'40.8"E	-	RNP APCH	-
006	DF	PD516	-	-	-	R	-	-210	33°22'55.2"N 126°50'37.5"E	-	RNP APCH	-
007	TF	TENUL	Y	164(156.9)	9.7	-	-	-210	33°14'01.6"N 126°55'08.7"E	-	RNP APCH	-
008	HM	TENUL	Y	320(312.7)	-	R	-7 000 +6 000	-210	33°14'01.6"N 126°55'08.7"E	-	RNP APCH	Outbound time 1 min

**JEJU/Jeongseok(RKPD)**

**VOR RWY 01**



OFFICE OF CIVIL AVIATION



JEJU/Jeongseok(RKPD)  
VOR RWY 01

## AERONAUTICAL DATA TABULATION

VOR approach to RWY 01 from TENUL, EGOMI		
Fix/point		Coordinates
TENUL(IAF)	R 140 JDG/14.00 NM	33°14'01.6"N 126°55'08.7"E
EGOMI(IAF)	R 225 JDG/14.00 NM	33°12'24.7"N 126°32'40.7"E
GAPHA(IF)	BRG 191.58°/14.00 NM JDG	33°09'32.5"N 126°41'39.1"E
D5.0 JDG(FAF)	BRG 191.58°/5.00 NM JDG	33°18'32.0"N 126°42'26.0"E
D2.5 JDG(MAPt)	BRG 191.58°/2.50 NM JDG	33°21'01.9"N 126°42'39.0"E
THR RWY 01	Final approach descent angle 3.30°	33°22'58.36"N 126°42'41.71"E
JDG VOR/DME		33°23'31.8"N 126°42'52.1"E
D1.5 JDG(MATF)	1.50 NM JDG	33°25'01.7"N 126°42'59.9"E
TENUL(MAHF)	R 140 JDG/14.00 NM	33°14'01.6"N 126°55'08.7"E